

OMNISEC SOFTWARE: v11.41 (PSS0051-23) SOFTWARE UPDATE NOTIFICATION

Introduction

This document details the release of software PSS0051-23: v11.41 of the software for the OMNISEC system. It covers software issues fixed and new features introduced. This information is required to perform a risk analysis to determine if the software should be installed. In this risk analysis the benefits of the new features provided and resolved software issues must be weighed against the risk of new issues that may be introduced to vital areas of the software or possible changes to the results of future analysis. Installation instructions are provided.

Users of 21 CFR functionality

If you are using the 21 CFR functionality in OMNISEC it is recommended that you read the previous SUN documents between the OMNISEC software version you have installed and this SUN.

No new OMNISEC permissions are introduced in this release, but if you are updating through multiple versions these could have changed and a new access control file may be required.

1. Using the OMNISEC software make a note of the location of the access control file (Administrator access required).
2. Close OMNISEC software.
3. Using the MAC software import the new permissions file. (See MAC user manual)
4. Check new permissions and add/remove as required to the user groups.
5. Export the new access control file with the same name as previously used to the folder location noted in step 1.
6. Update OMNISEC and open the software.
7. Access control should still be enabled with the new permissions active.

Version compatibility

Note:



If OMNISEC software is already installed, Do not attempt to install OMNISEC releases with a version number lower than that already installed on your system. This could cause database issues, please contact your Malvern Panalytical representative if you are required to do this.



Installation

It is assumed that you have authority to install or update software within your facility. It is also assumed that you have Administrator rights for the system upon which the software is installed, as this is a requirement of the installation process. If you do not have this authority please consult with your I.T. support department before proceeding.

Recommended System Requirements

The recommended computer system requirements for running this software are highlighted in table 1 below.

Table 1: Recommended system requirements for the OMNISEC software.

Feature	Specification
Processor Type	Intel Core i7 processor (8 th Gen or higher),
Memory	16 GB RAM
Hard Disk Storage	500 GB free hard disk space,
Display Resolution	1920 x 1080 full HD screen resolution running in 16 bit color mode,
Connectivity	2 free USB port,
Operating System	Windows 10 64-bit Professional operating system.

Supported operating systems

OMNISEC software v11 is compatible with Windows 10 Professional/Enterprise. Tested and support on Windows 10 version 1909 and later. Only 64-bit versions are supported.

Windows XP, Windows Vista, Windows 7 and Windows 8 are not supported. Versions of Windows 10 prior to 1909 are also not supported.

Supported Languages

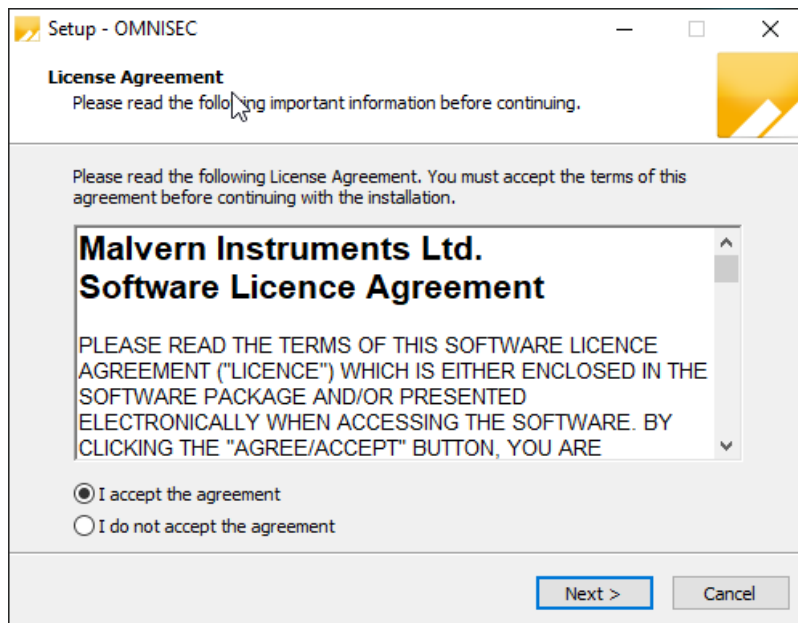
English

Installation Instructions

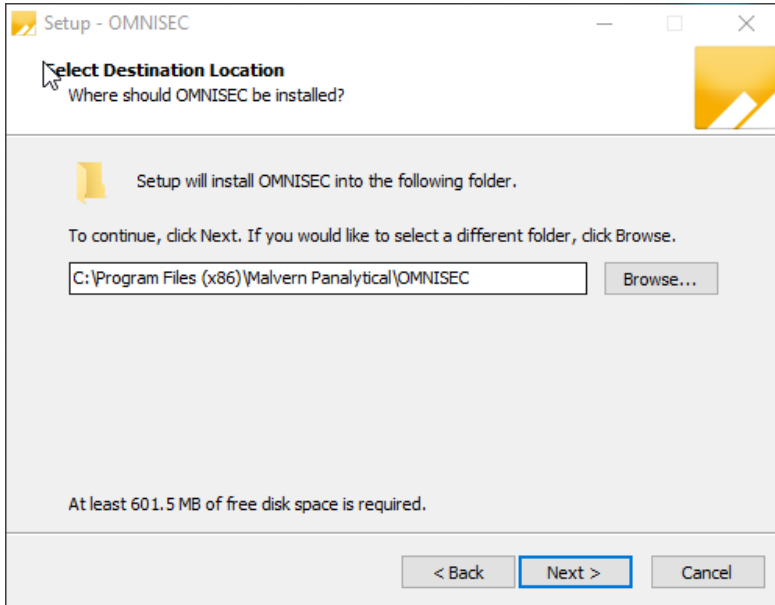
Windows 10 64 bit Professional

The software suite is available as a web download. The downloaded extractor contains OMNISEC1141.exe application installer and the SUN and CoC.

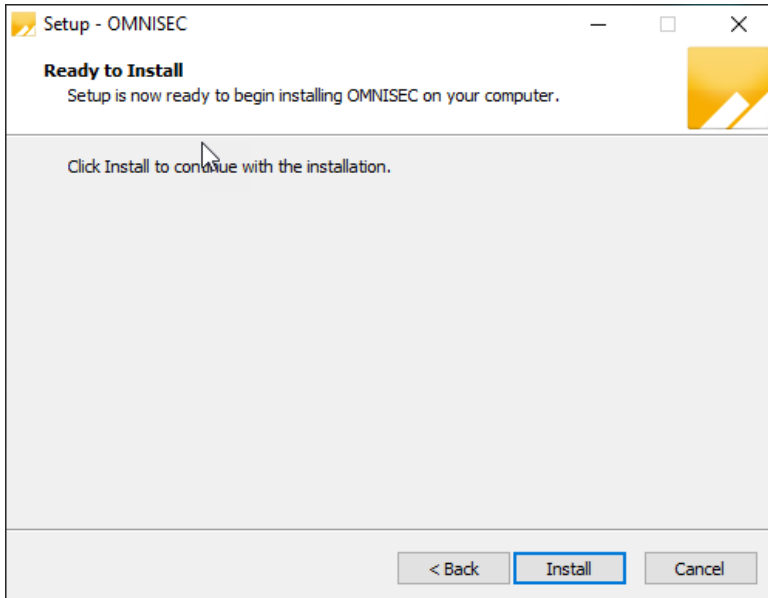
Run the installer by double-click on the installer file, OMNISEC1141.exe, to begin the installation.



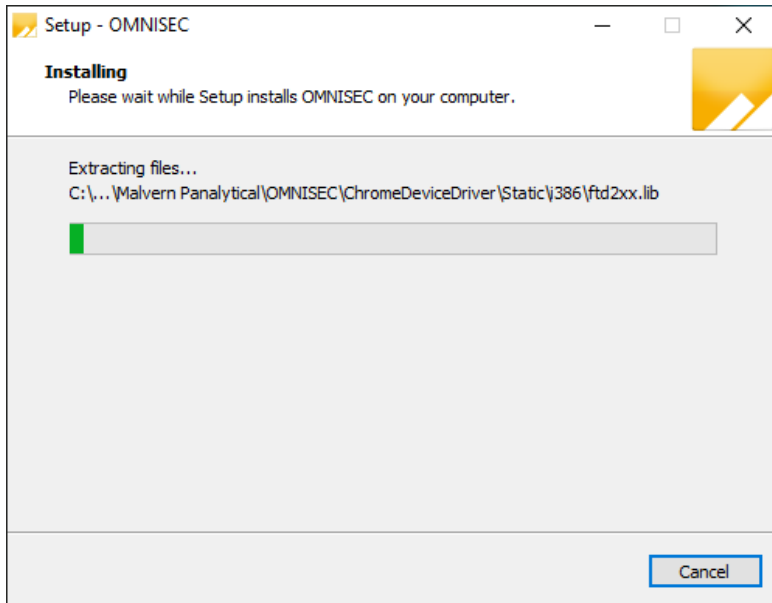
When the license agreement window appears, if you accept the agreement, select **I accept the agreement** and press next. You can select cancel if you would like to stop the setup and continue another time.



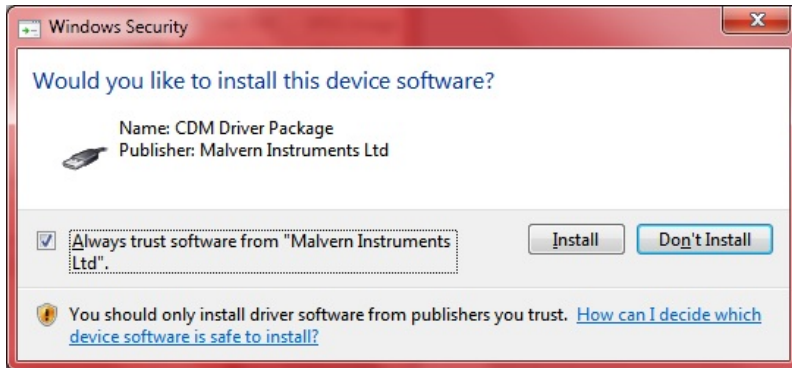
Select the destination location for OMNISEC to install. It is recommended that this remains the default path. Select Next to process.



Once you have followed all the instructions and clicked "Install", the software will begin the installation process.



If this is the first time OMNISEC v11 is being installed, it will install a 2019 SQL Server instance. This process may take 10 to 20 minutes to complete.



During the installation, a Windows Security window may appear asking if you would like to install a device. Select "Install" to install the device.



The last section in the Setup window will inform you that the computer needs to be restarted to complete the setup. Once the computer has been fully restarted, OMNISEC v11 will be ready to use.

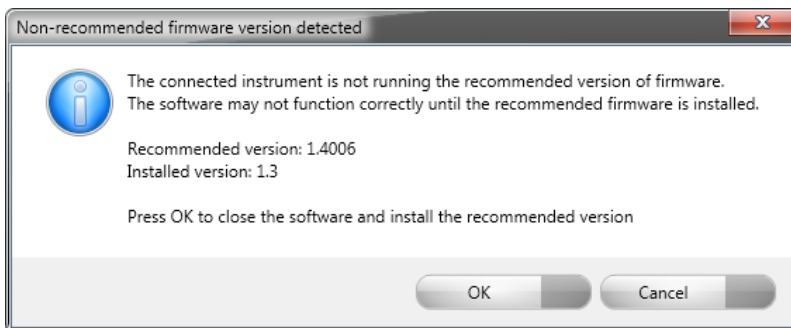
Connecting the OMNISEC to a PC

With the software installed, the instrument should be connected via the USB port, and the system switched on. If present, turn on OMNISEC RESOLVE first and wait 30 seconds for it to complete its startup. Next, turn on OMNISEC REVEAL and wait 1 minute to allow it to complete its startup and connect to OMNISEC RESOLVE. When the two instruments are connected, the light bars on both instruments should be green.

If this is the first time connecting the instrument to the PC, there will be a message that appears saying "Installing device driver software". The names used to identify the drivers will be "CMULx25", "CHROME TAU A" and "CHROME TAU B". Allow the installation to proceed and do not disconnect the instrument from the PC during this process. Once the drivers have been installed, Windows will indicate that they are ready to use.

Updating the OMNISEC REVEAL firmware

The first time you launch OMNISEC v11 with an OMNISEC REVEAL connected, you may be prompted to install a new version of the instrument firmware.



Updating the firmware improves system reliability and compatibility with the version of OMNISEC v11 you have installed on your computer. The update process takes up to 10 minutes and the instrument will need to be power cycled after the update is complete.

Click **OK** to close the OMNISEC application. After a few seconds, the OMNISEC Firmware Updater program should automatically launch.

Note:

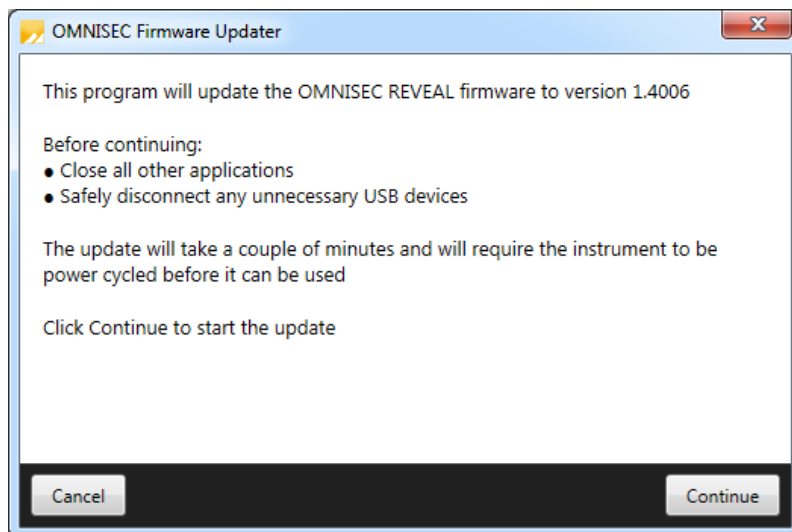
If the OMNISEC Firmware Updater fails to open, or if the updater says it could not detect the instrument, disconnect the instrument, relaunch OMNISEC V11 and reconnect the instrument. You should receive the update prompt to try again.

**Note:**

If SEC-MALS 9 or 20 is present, please turn-off and disconnect this detectors communication cable from the PC or REVEAL. Then update the firmware with just the RESOLVE-REVEAL. Once the update process has taken place the SEC-MALS can be reconnected and the settings configured.

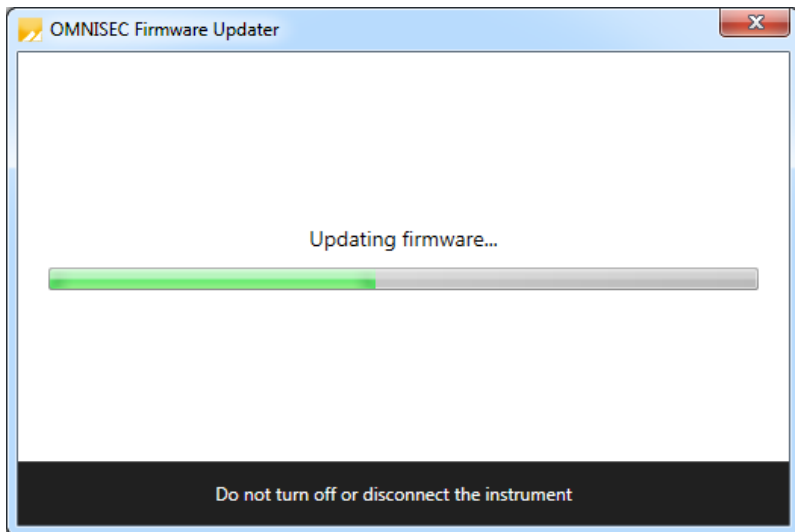
**Note:**

Firmware version installed with this software version is **1.7003**



When the OMNISEC Firmware Updater launches, you should carefully read the information presented to you before continuing.

Click **Continue** to start the update process.



The update process takes several minutes. It is recommended that you do not do anything else on your computer during the update.

After the firmware update has completed, you will be prompted to power cycle the instrument. Once the power up cycle has completed and you see the green lights on the front of RESOLVE and REVEAL click **Exit** and relaunch OMNISEC v11.



Note:

If the update process fails, you don't see two green lights on the instrument or you are still being prompted to update the firmware, try power cycling the instrument and restarting OMNISEC V11 again.

Uninstall Procedure

The software can be uninstalled using the 'Apps' section of Windows 10 'Settings' which can be accessed from the start menu.

New Features

New features introduced in this release of OMNISEC are listed below.

Table 2: New features in OMNISEC 11.41

Reference	Issue	Comment
179209 - 172871	Improvements to memory usage of the OMNISEC software.	

Fixed issues

The fixed issues in this release of the software are listed below.

Table 3: Fixed issues in OMNISEC 11.41

Reference	Issue	Comment
100564	Portion of OMNISEC name cut off	No Comment
104387	Gridlines re-appear after being disabled.	No Comment
180253	Data in data selector view can be deleted twice leading to crash on second attempt.	No Comment
180263	Calculated concentration incorrect after compositional analysis	No Comment

Known Issues

The following software bugs have been discovered within the software and will be investigated as part of a future release. Please follow the suggested work-around.

Table 4: Known issues in OMNISEC v11.41 software.

Reference	Issue	Workaround
73366	Calculation method not refreshed when save permission is denied through access control file	No workaround
75977	The top of the MALS Fit Order view can be cut off	Resize the view
75978	The MALS fit order slider remains on the Raw data view after switching from a MALS method to a non-MALS method if MALS Model/Fit View window is active	Do not have the MALS Model/Fit View as an active window
76199	UV causing out of memory crashes	No workaround
76528	Fraction collector triggers on baseline monitor activation	When a baseline monitor is run, turn off the fraction collector.
77659	Injection Volume Tooltip "Default" Validation Shown Instead of Mode-Specific-Validation	No workaround
80765	Derived data plot shows kick in logMw trace in some circumstances	No workaround
80874	Windows 10 Style Fixes	No workaround
82353	Baselines may not appear on the Raw Data chart even though the points are set	Switch to a different record then switch back. If the problem remains, restart the software.
87304	Copy Graph function produces 'fuzzy' graphs	No workaround. Copy from report designer rather than the analysis screen.
90230	Limit/baseline changes after license expires causes crash	No work around



91107	Axis numbers extend past chromatogram window when highlighting	No Workaround
92608	SQL Server 2014 Express installation fails	Cycle the PC power and restart the installation
93028	A failed migration can break audit trails	No workaround
93246	Deleting a recent sequence does not remove it from the Analyze Data list on the Start Page	No workaround
93281	Performing a Full Zoom Out after turning off Auto-Scaling in acquisition does not refresh the axes properly	No workaround
93283	Default Method does not work on MALS 9	No workaround
93497	Error when last MALS point deselected in Model/Fit View	Have at least 1 data point selected
93498	Deselecting all MALS point in Model/Fit View doesn't work	Have at least 1 data point selected
96064	User can add unbounded length description in Tools > Database editor dialogs	Limit the length of the database item.
98614	Right-click baseline point counts as baseline change	No Workaround
98939	Safety event display is delayed until after a purge	No Workaround
99104	User must select set on instrument controls to get the temperatures value	No Workaround
99195	Finding Limits and Baseline Dialog locking Audit Validation	No Workaround
99232	Autosampler loop volume setting does not take effect without restarting the software	Restart the software when volume changes are made.
99385	Load Axis not functioning	No Workaround
99670	Light scattering laser turns off when sequence paused for over 1 hour	Don't pause sequences for longer than 1 hour.
99730	Distribution plot - multiple axis appear	No Workaround
99766	Software crashes if grid column settings file(s) missing	No Workaround
100533	When instrument method is applied update Target temperatures	No Workaround
100566	Name of pump flow rate incorrect in sequence information table report designer	No Workaround
100746	Data from baseline monitor acquisition not saved	No Workaround
102002	Baseline point markers don't show the correct x and y values	No Workaround
102318	Injection Volume set to 100 when stopping Acquisition	No Workaround
102324	Missing audit trails created on database migration	No Workaround

103113	Fatal error while processing - out of memory errors.	No Workaround
103398	Failure to save when analyzing an injection stopped by safety event	No Workaround
103508	derived data view axis changes cause a crash	No Workaround
103588	Signature context menu items do not always respect permissions	No Workaround
104258	search in report item selector does not work	Manually select the items that you want in a report.
104285	Print preview does not update when analysis changes	No Workaround
107573	Data Selector - 'From - to' Date is not fetching data correctly	No Workaround
107907	Access Denied Error when upgrading existing installation	Rename the Audit Trails folder so it is recreated. Audit trails can then be moved back into the new folder post-installation before starting the software.
108289	y-axis in raw data report widget - display with no dp	No Workaround
108290	top of the peaks cut off in raw data report widget	No Workaround
108619	Import errors can effectively hang the software	No Workaround
108620	axes flashing and non-responsive	No Workaround
109774	Flow rate setup method action doesn't stop on simulated pressure safety event	No Workaround
110709	User prompted to install into the correct folder on upgrade	No Workaround
111949	all report charts show the wrong axis numbers	No Workaround
112410	Notes added in the Sequence have no max character	No Workaround
112820	make column labels consistent in reports	No Workaround
112889	table alignment	No Workaround
112913	Flow rate decimal places	No Workaround
113313	Pump may not go to standby flow rate when temperature tolerance alarm tripped	No Workaround
113427	Temperature alarms intermittent	No Workaround
114114	Inconsistent capitalization in Calculation Method Editor page list	No Workaround
114255	Environment tolerance alarm text displayed for non tolerance alarms	No Workaround
115499	Signed on/by columns in Record View do not show signatures	Refer to the Signature widget



115620	Polymer reports crash	No Workaround
115779	First enabled Electronic Signatures can cause an exception	No Workaround
115808	Exporting the currently selected file throws up an Exception Error	No Workaround
115865	Report with same name cancelled causes the selector to incorrectly display	No Workaround
116556	Locked analysis – Column calibration analysis lost if exported to v33 then reimported to v40	Don't export v40 column calibration analysis to pre-v40 database versions
116574	Software fails to start if Reports folder permissions are incorrect	Ensure permissions are correct
118428	Creating a calculation method with limits but no baselines removes limits/adds baselines	No Workaround
118998	Ctrl+right-click add baselines adds baseline(point)s incorrectly	No Workaround
119316	Introduce the "Batch number" to the advanced data selector so that it can be used as a search parameter.	No Workaround
124958	Error plotting (and multiple) MALS Temperature axis	No Workaround
124961	Invalid Raw Data calibration points when switching between column cal method type	No Workaround
124963	Select sensible defaults for MALS Temperature axis	No Workaround
135237	Acquisition should not continue if REVEAL connection fails	No Workaround
135861	Features file does not update to latest version number when upgrading	No Workaround
139136	Investigate BBv2 noisy compositional channels	Use BBV1
141549	Log file - one or more errors have occurred when opening data	No Workaround
142533	in distribution plot Weight fraction B does not scale well when no fraction B...	No Workaround
142574	Limits should show in Raw Data when a different calibration standard is selected	No Workaround
143092	Invalid dn/dc and dA/dc values error causes limits to disappear.	No Workaround
143233	Fix Analysis tick interval for flat curves	No Workaround
143642	Investigate auditing problems with MALS Model/Fit View changes	No Workaround
144421	Fix zeroes at the start of dn/dc and RI/UV Ratio curves	No Workaround
144654	Cannot delete data	No Workaround
145317	Reports cut off results if list too long	Create multiple shorter reports.

145373	Investigate MALS vapour sensor not triggering	No Workaround
146092	MALS environmental tolerance controls not functioning as expected.	No Workaround
146618	Tool tips appear blank in method calculation editor	No Workaround
148866	Overlay Reports causing crash	Overlaying 2 or more samples can infrequently cause issues. If problem occurs restart system.
148975	First RI zero failing in set up process and leaving pump running	No Workaround
149912	Sequence finished audit event appears in wrong position in audit trail	Note the expected order in the Audit trail.
154989	Windows clipboard error caused application crash	No Workaround
156096	Copying from IV Distribution does not copy all data	No Workaround
157326	Shouldn't be able to Drag the Standard Points on Column Cal Curve Raw data Chart	Don't drag data points on Column calibration curve (has no effect on the results – only a presentation issues)
157523	3D Spectrograph Chart has over lapping unit and number for some data	No Workaround
167140	Sequence stopping part way through	Contact your local Malvern Panalytical helpdesk
168386	Crash on startup if user report file missing	Contact your local Malvern Panalytical helpdesk
175902	Calibration with two peaks gives error	No Workaround
179353	Extrapolation lines can be shown in CC	No Workaround
181482	Original sequence name is not displayed in edit run conditions dialog	No Workaround
181857	Overpressure Error when switching off OMNISEC software and ON again with pressure above 2MPa	Don't restart the software with pressure above 2MPa.
186610	Crash when overlaying unsaved processed data and unprocessed data.	Save data before selecting the overlay.



MALVERN PANALYTICAL

Malvern Panalytical Ltd.
Groewood Road, Malvern,
Worcestershire, WR14 1XZ,
United Kingdom

Malvern Panalytical B.V.
Lelyweg 1, 7602 EA Almelo,
The Netherlands

Tel: +44 1684 892456
Fax: +44 1684 892789

Tel: +31 546 534 444
Fax: +31 546 534 598

info@malvernpanalytical.com
www.malvernpanalytical.com

Disclaimer: Although diligent care has been used to ensure that the information in this material is accurate, nothing herein can be construed to imply any representation or warranty as to the accuracy, correctness or completeness of this information and we shall not be liable for errors contained herein or for damages in connection with the use of this material. Malvern Panalytical reserves the right to change the content in this material at any time without notice. Copyright: © 2023 Malvern Panalytical. This publication or any portion thereof may not be copied or transmitted without our express written permission.