

---

# Software Update Notification



---

<b>Product</b>	<b>PartNo.-Issue</b>
Malvern Link Application	PSW0066 / 1.36

SCR = Software Change Request  
DCO = Design Change Order  
SUN = Software Update Notification

---

# Software Update Notification



---

## 0 Contents

<b>0</b>	<b>Contents .....</b>	<b>2</b>
<b>1</b>	<b>Introduction.....</b>	<b>3</b>
<b>2</b>	<b>Minimum Computer requirements.....</b>	<b>3</b>
<b>3</b>	<b>Instrument compatibility.....</b>	<b>4</b>
<b>4</b>	<b>Changes made via SCR. (1.36).....</b>	<b>4</b>
<b>5</b>	<b>Known Bugs.....</b>	<b>4</b>
<b>6</b>	<b>Known Issues .....</b>	<b>4</b>
6.1	Drivers .....	4
6.2	iFix and Windows XP .....	4
<b>7</b>	<b>Distribution Media .....</b>	<b>4</b>
<b>8</b>	<b>Install Procedure .....</b>	<b>5</b>
8.1	Before installing iFix .....	5
8.2	General instruction .....	5
8.3	Data Backup.....	5
8.4	Installation start-up .....	5
8.5	New installation .....	5
8.6	Update of Malvern Link Software .....	6
<b>9</b>	<b>Uninstall Procedure .....</b>	<b>6</b>
<b>10</b>	<b>Tips and tricks .....</b>	<b>7</b>
10.1	Configuration folder .....	7
10.2	Display an opened frame bench on the liquid mimic .....	7
10.3	Insitec laser permanently on .....	7
10.4	Restricted operator level .....	7
10.5	Remote control and stopping the scheduler.....	7
10.6	Alarms Delay .....	8
10.7	Change the sequencer speed .....	8
10.8	Valve sequencer - Window message.....	8
10.9	Controller – Timeout error message .....	8
10.10	Log files .....	9
10.11	Shortcut on the desktop .....	10
10.12	Liquid or Dry selection.....	11
10.13	New RTSizer windows size.....	12
10.14	Customizing the View menu.....	13
10.15	Production Tracker Mimic.....	14
10.15.1	Mimic.....	15
10.15.2	Change the alarm limits .....	15
10.15.3	Start a new production now.....	16
10.15.4	Change the production starting date.....	16
10.15.5	Get historical results.....	16

---

# Software Update Notification



---

## 1 Introduction

This is the version 1.36 of Malvern Link. Malvern Link is the automation software for the Insitec System. Before installing Malvern Link the following software must be installed on your computer

- CPS0018 : IFix (Scada Package)
- PSW0066 : RTSizer software

The software is tested and supported on the following Microsoft Operating Systems:

- Windows XP (professional sp2 or higher) -> preferred platform

## 2 Minimum Computer requirements

Minimum requirement

- Pentium III 1.4GHz (or higher) processor
- Minimum 512 MB RAM
- 10 GB hard drive disk space
- CD-ROM drive
- Parallel port
- SVGA or higher colour monitor (1020\*768 / 65535)
- 1 USB port
- 2 serial ports (some devices require an extra serial port)

---

# Software Update Notification



---

## 3 Instrument compatibility

This software is compatible with the RTSizer v5.31 and higher.

## 4 Changes made via SCR. (1.36)

SCR#	Description	Comments
6287	Automatic background during an Auto-dilution	Fixed
6288	Malvern Link should have an option allowing a simple auto-dilution in liquid mode	Implemented
6289	Security system issue with the menu	Fixed
6290	The liquid mimic displays an open frame optical head	Implemented
6291	Advanced programs option and dry system	Fixed
6292	The general fault tag reports an error even if the error has been disabled	Fixed
6293	Problem with the number of sampler with the LPS System	Fixed
6294	It should not be possible to start a Remote At-line measurement when Malvern Link is in Local mode	Fixed
6295	Unable to send real value to a Malvern Link tag	Fixed
6296	It should be possible to add or delete iFix tags in engineering mode	Implemented

## 5 Known Bugs

There are no known serious bugs at the time of this release. If you suspect that you have discovered a bug, you should report this to Malvern Instruments detailing all aspects of the symptoms.

## 6 Known Issues

### 6.1 Drivers

If you are using drivers do not install two drivers using the same serial port. It could be source of several error messages.

### 6.2 iFix and Windows XP

Depending of the level of Windows XP upgrade you may have to install the USB key driver before installing iFix.

The driver is located on the CD in the folder `\TOOLS\iFix USB Key Driver`.

## 7 Distribution Media

Malvern Link Version 1.36 software is contained on a single self-installing CD-ROM. Any fault during the installation process will be detected and the user is notified. The Installation process has been tested in all the supported configurations of operating system.

---

## 8 Install Procedure

### 8.1 Before installing iFix

To avoid any issue with the iFix installation it's highly recommended to install the USB key driver first. The driver on the cd in the following folder:

*\\TOOLS\\iFix USB Key Driver*

### 8.2 General instruction

You will find the details of the installation instruction on the CD-ROM in the following file:  
*\\Technical Doc\\ TNML-General Setup Instructions (GM – 20APR2005).pdf.*

### 8.3 Data Backup

All data is the user responsibility and it is good practice to back it up on a daily basis. It is also a good practice to backup all data before installing new application software.

### 8.4 Installation start-up

The software suite comes on auto-loading CD-ROM. Inserting the drive into a system configured to Auto-run a CD will run the installation program automatically. If your system does not support this feature run the **lsetup.exe** program from the root directory of your CD drive.

Malvern Link software is an automation software based on iFix SCADA Software from GE Fanuc . It controls RTSizer and valve controller (Siemens S7-224 or Wago modules 750-XXX) .

It's not a standalone software and needs the installation of

- RTSizer (PSW0066)
- iFix (CPS0018)

to run correctly.

### 8.5 New installation

**You must install the software in the following order :**

- 1) **iFIX**
- 2) **Rtsizer Software**
- 3) **Malvern Link**

**iFix is protected by an Hardware key or dongle . It exists 2 types of dongles :**

- **Parallel dongle**
- **USB port**

**Before installing iFix it's better to first install the USB dongle Driver HASP\_USER\_SETUP**

**A dongle is compatible with one specific version of iFix. Before installing iFix you have to verify the compatibility.**

---

# Software Update Notification



---

Concerning the USB dongle install iFix first and ignore the message the error messages before connecting the dongle .

## 8.6 Update of Malvern Link Software

1. Save the Malvern Link Configuration.
2. Uninstall Malvern Link Version 1.1x or 1.2x
3. Uninstall the old version of RTSizer Software.
4. Install RTSizer software version 7.xx.
5. Install The new version of Malvern Link ( v 1.36)
6. Start Malvern Link and Load the correct configuration.

### **Note :**

**It's not necessary to uninstall iFIX to update Malvern Link software.**

**If you have to reinstall iFix you have to first uninstall the software.**

**Check if the iFIX dongle is compatible with the version of iFIX you want to install.**

## 9 Uninstall Procedure

To uninstall the software use the menu

- ✓ Start
  - ✓ Setting
    - ✓ Control Panel
      - ✓ Add/Remove Program

And select the programs you want to remove.

---

## 10 Tips and tricks

### 10.1 Configuration folder

The customer mimic and the mimics implemented in the view menu are now saved in the configuration folder.

### 10.2 Display an opened frame bench on the liquid mimic

It's possible to display an opened frame bench on the liquid mimic

Open the file **C:\DynamicsMalvernLink\_1-30\Pic\MalvernLink.ini** and change the following section:

```
[CONFIG]
```

```
....  
OpenedFrame    =        1  
....
```

If the value is 0 or if the field doesn't exist Malvern Link will display a standard liquid optical head

### 10.3 Insitec laser permanently on

It's possible to disabled force the Insitec Laser to never stop. It allows avoiding the stabilisation period but it's going to reduce the life time of the laser

To enable the option you have to create the following file:

**C:\DynamicsMalvernLink\_1-30\Pic\ForceLaserOn.cfg**

To disable the option you only have to delete or rename the file.

The content of the file is not important. Malvern Link test if the file is existing or not to enable the option.

### 10.4 Restricted operator level

It's possible to disable the Buttons RTSizer, Alarms and Help for a simple operator:

To enable the option you have to create the following file:

**C:\DynamicsMalvernLink\_1-30\Pic\RestrictedAccess.cfg**

To disable the option you only have to delete or rename the file.

The content of the file is not important. Malvern Link test if the file is existing or not to enable the option.

### 10.5 Remote control and stopping the scheduler

In remote stop there is to way to stop scheduler

- Abort the sequence
- Wait the end of the sequence before stopping

By default Malvern Link is waiting for the end. You can change the setting by creating the following file

---

# Software Update Notification



---

## ***C:\Dynamics\MalvernLink\_1-30\Pic\RemoteAbortScheduler.cfg***

To disable the option you only have to delete or rename the file.

The content of the file is not important. Malvern Link test if the file is existing or not to enable the option.

## **10.6 Alarms Delay**

During the Malvern Link start-up you can add a delay before displaying the first alarm.

Open the file ***C:\Dynamics\MalvernLink\_1-30\Pic\MalvernLink.ini*** and change the following section:

```
[CONFIG]
....
AlarmTimeOut    =        0.5
....
```

The value is a period in minutes

## **10.7 Change the sequencer speed**

You can change the clock of the sequencer (1000 ms by default)

Create a file called ***C:\Dynamics\MalvernLink\_1-30\Pic\Status\_Picture\_CFR.tmr*** with the following contents:

```
[TIMER]
INTERVAL=1000
```

Interval is the clock in milliseconds.

Restart MalvernLink to see the changes (or Insitac 1997 the file to create is ***C:\Dynamics\MalvernLink\_1-30\Pic\Status\_Picture\_NOCFR.tmr***)

## **10.8 Valve sequencer - Window message**

You can disable the window message of the valve sequencer

Create a file called ***C:\Dynamics\MalvernLink\_1-30\Pic\Status\_Picture\_CFR.tmr*** with the following contents:

```
[MESSAGE]
ShowWindowMessage =        0 (1=enabled / 0=disabled)
```

Restart MalvernLink to see the changes (or Insitac 1997 the file to create is ***C:\Dynamics\MalvernLink\_1-30\Pic\Status\_Picture\_NOCFR.tmr***)

## **10.9 Controller – Timeout error message**

If the valve sequencer is blocked in one step you will get an error message after a timeout period. If the timeout expires the controller return to the sleep step and raises an error.

By default the period is 60 minutes. If you want to change it, open the file ***C:\Dynamics\MalvernLink\_1-30\Pic\MalvernLink.ini*** and change the following section:

```
[CONFIG]
....
ControllerTimeOut = 60
```



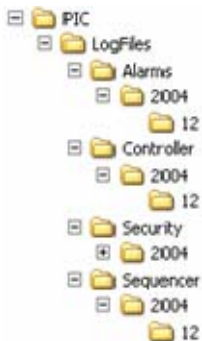
---

## 10.10 Log files

By-clicking on **View / Log files**, it's possible to display the contains of the log files. Malvern Link Creates 4 categories of log files:

- Valves sequencer      Logs the steps of the valves sequencer
- Controller              Logs the actions of the main controller
- Scheduler                Logs the steps of the scheduler
- Security                  Logs the security actions

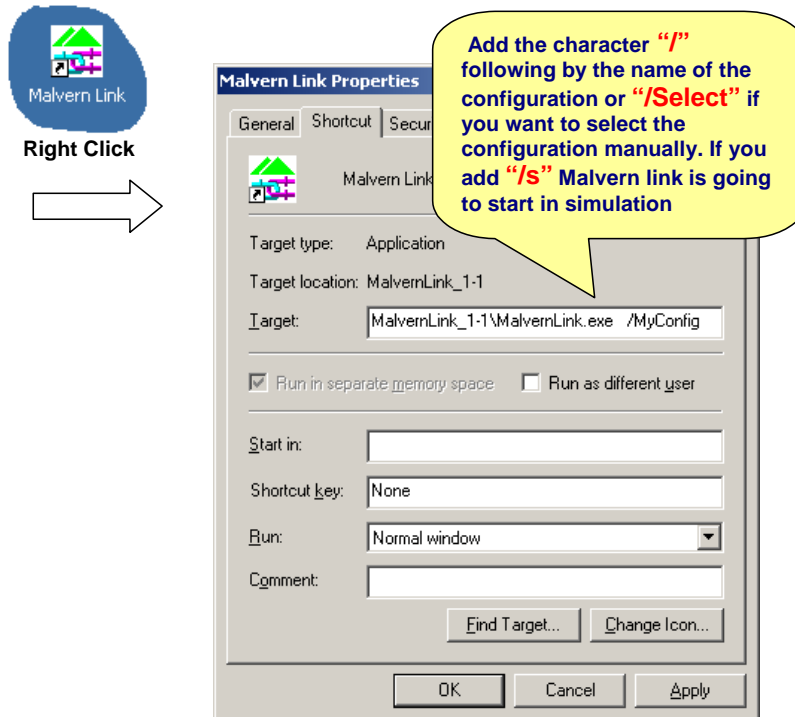
The text files are located in the folder **C:\Dynamics\MalvernLink\_1-30\Pic\LogFiles** . Malvern Link creates 1 folder per year / 1 folder per month / 1 log file per day :



## 10.11 Shortcut on the desktop

It's now possible to get more than one Malvern Link shortcut on the desktop. A shortcut will be linked to a specific Malvern Link configuration or will allow to the user to select one configuration in the list.

- Right click on the Malvern Link shortcut and click on properties:



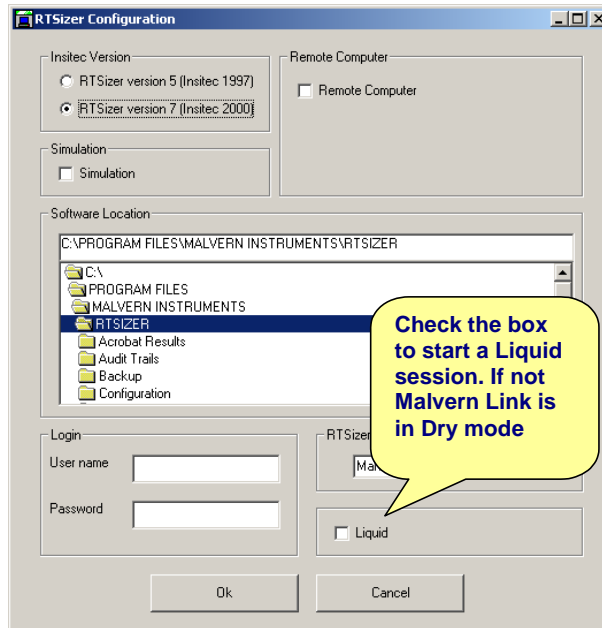
# Software Update Notification



## 10.12 Liquid or Dry selection

It's now possible to select a Liquid or a Dry mimic

- ❑ Close Malvern Link
- ❑ Click on **Start / Programs / Malvern Instruments / Malvern Link / RTSizer Configuration**



The difference concerns mainly the mimic and some specific options (Auger, Venturi, Diluter, Ultrasound, ...) Otherwise Malvern Link are exactly the same for the both mode.

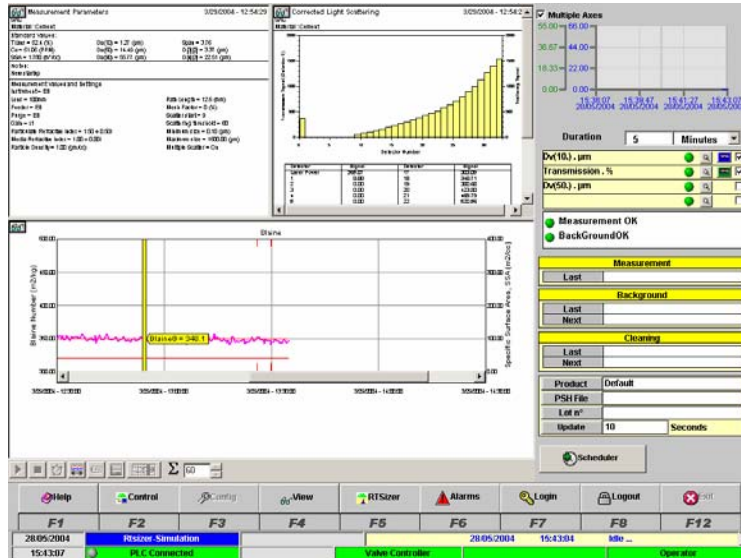
# Software Update Notification



## 10.13 New RTSizer windows size

The RTSizer windows fit correctly in

The RTSizer software fits in the Malvern Link mimic. In operator Level the menu are hidden.



It's possible to change the size of RTSizer by changing the value in the file:  
**C:\Dynamics\MalvernLink\_1-30\Pic\Dynamise.cfg**

```
[0]                0 for Operator / 1 for new group / 2 for Spervisor / 3 for Engineering
X1 = 0
Y1 = 0
X2 = 730
Y2 = 683
OFFSET_X = -4
OFFSET_Y = -70
HIDE_X = 0
HIDE_Y = -47

[1]
X1 = 0
Y1 = 0
X2 = 730
Y2 = 683
OFFSET_X = -4
OFFSET_Y = -43
HIDE_X = 0
HIDE_Y = -20
.....
```

If you have any problem you can start the following program to restore the size:

**C:\Dynamics\MalvernLink\_1-30\Pic\RTSizer Full Screen**

**Deleting the file disables this feature.**

## 10.14 Customizing the View menu

Create or open the files

**C:\Dynamics\MalvernLink\_1-30\Pic\Menu\_View.cfg :**

The following example adds a button to called "MyButton" displaying a mimic called "MyPicture.grf" accessible from the operator level ( Level 0)

```
=====
//
// The section [Menu_View] contains the name of the picture launched
// when the user press on View menu .
//
// By default the name of the picture is Menu_view

// The name picture of the menu view are:
//
// - Standard      :      Menu_View
// - 1 additional button :      Menu_View_01
// - 2 additional button :      Menu_View_02
// - 3 additional button :      Menu_View_03
// - 4 additional button :      Menu_View_04
//
=====
//
// The section [1],[2],[3] and [4] contain the configuration of each
// individual additional button
//
// - Caption      : defines the caption of the button
//                  displayed in the menu view
//
// - Picture      : defines the picture started when the
//                  user press on the additionnal button
//
// - Group        : defines minimum group allow using the
//                  additionnal button
//                  - 0 : Operator
//                  - 1 : Configurable User
//                  - 2 : Supervisor
//                  - 3 : Engineering
//
=====
```

[Menu\_View]

**Picture = Menu\_View\_01**

**[1]**  
**Caption = MyButton**  
**Picture = MyPicture**  
**Group = 0**

[2]  
Caption = Picture2  
Picture =  
Group = 2

[3]

....

---

## 10.15 Production Tracker Mimic

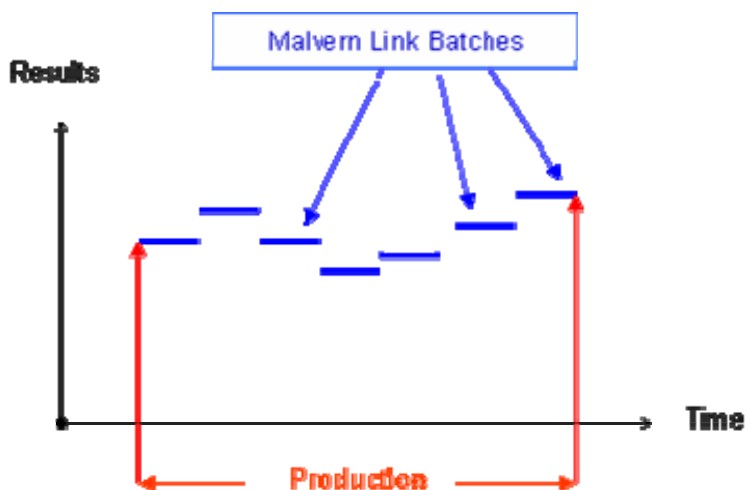
The following mimic :

**C:\Dynamics\MalvernLink\_1-30\Pic\Production.grf**

has been designed to follow a batch production . You can access to the mimic by using the customer mimic option or the method described previously ([§11.09](#))

The purpose of the mimic is to get an overview of a batch production. It could be helpful in a liquid application.

Basically a production is defined as a serial of Malvern Link batches. The mimic allows getting the averaging of many Malvern Link batches.

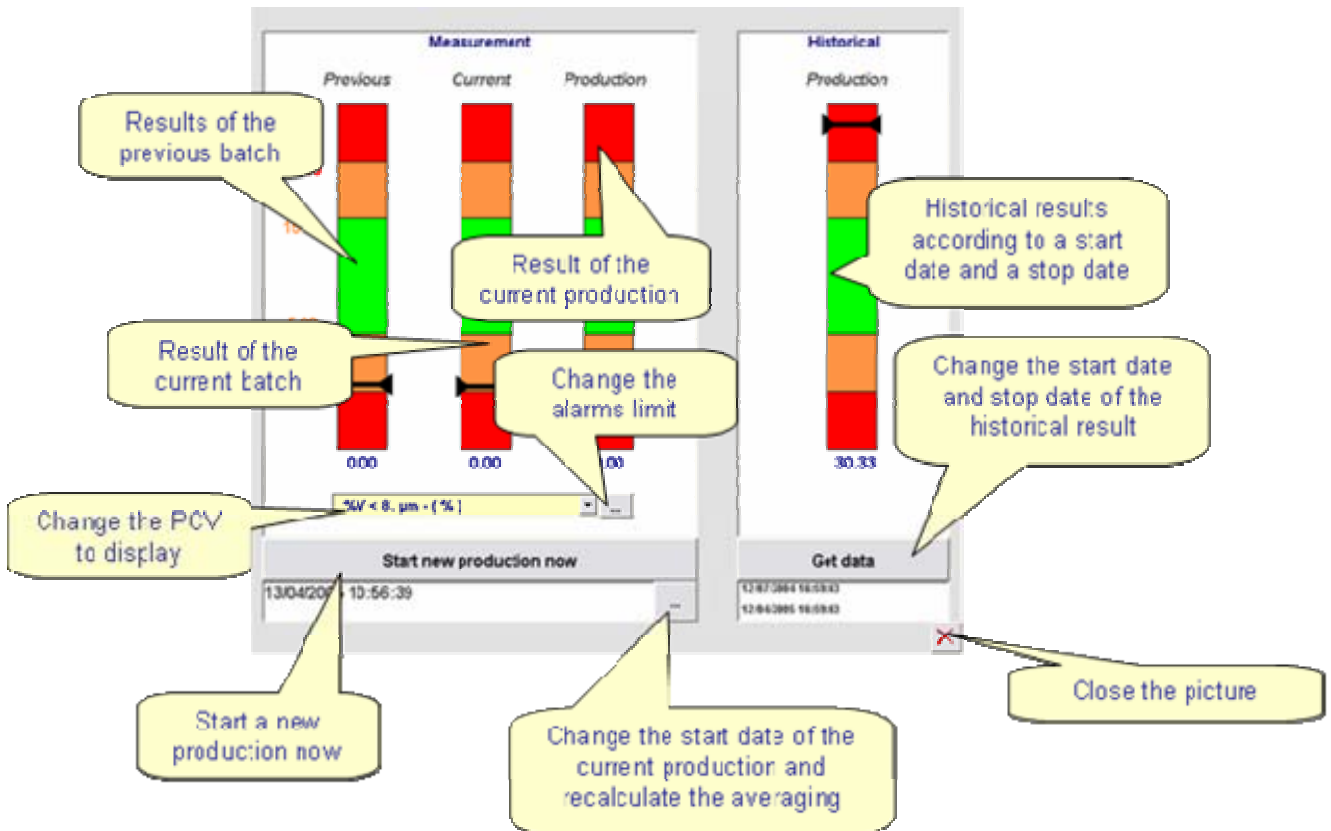


The mimic displays the results of the

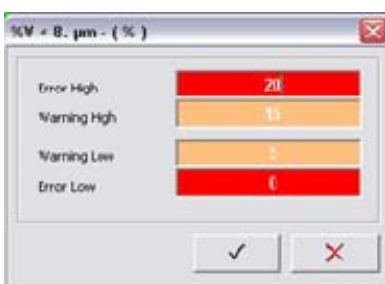
- Previous batch
- Current batch
- Current Production (averaging of batches)

# Software Update Notification

## 10.15.1 Mimic



## 10.15.2 Change the alarm limits

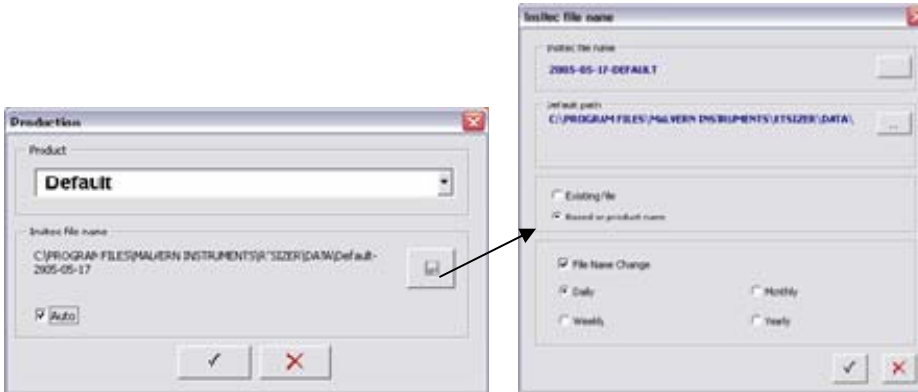


Changing the limits refreshes automatically the mimic cursors.

# Software Update Notification



## 10.15.3 Start a new production now



The option Auto will create automatically an Insitec file by using the date of the current day. If it's not selected you can click on the button and force a file name.

## 10.15.4 Change the production starting date



Change the date and time according to your batch starting point.

## 10.15.5 Get historical results



Change the date and time according to averaging results you want to check.