

## SOFTWARE UPDATE NOTIFICATION (SUN) – OMNISEC SOFTWARE v10.02: PSS0051-1



**MOLECULAR WEIGHT**



**MOLECULAR SIZE**



**MOLECULAR STRUCTURE**

### Introduction

This document details the installation and known issues with OMNISEC v10.02. This release is a minor release to fix a number of issues and add one software feature.

### Installation

It is assumed that you have authority to install or update software within your company's SOPs. If you do not have this authority please consult with your I.T. support department before proceeding.

It is assumed that you have Administrator rights for the computer. This is required by the installation process.

### Minimum System Requirements

Intel multi-core processor, 4 GB RAM, 500 GB free hard disk space, 1600 x 900 screen resolution running in 16 bit color mode, CD-ROM drive, 1 free USB port, Windows 7 Professional operating system.

### Recommended System Requirements

Intel Core i7 processor (Quad Core HT, 3.4 GHz Turbo, with HD Graphics), 8 GB RAM, 500 GB free hard disk space, 1920 x 1080 full HD screen resolution running in 16 bit color mode, CD-ROM drive, 1 free USB port, Windows 7 64 bit Professional operating system.

### Supported operating systems

OMNISEC software v10.02 is compatible with Windows 7. Both the 32 bit and 64 bit versions are supported.

Windows XP, Windows Vista, and Windows 8 are not supported.

### Supported Languages

English

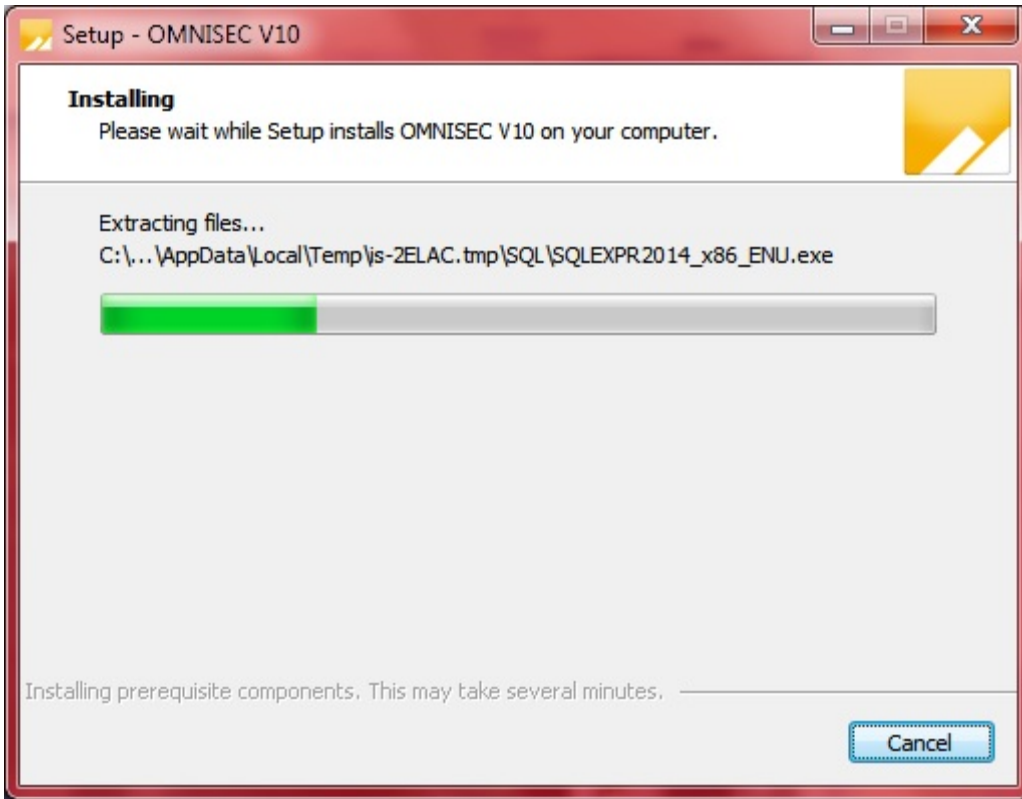
### Installation Instructions

## Windows 7

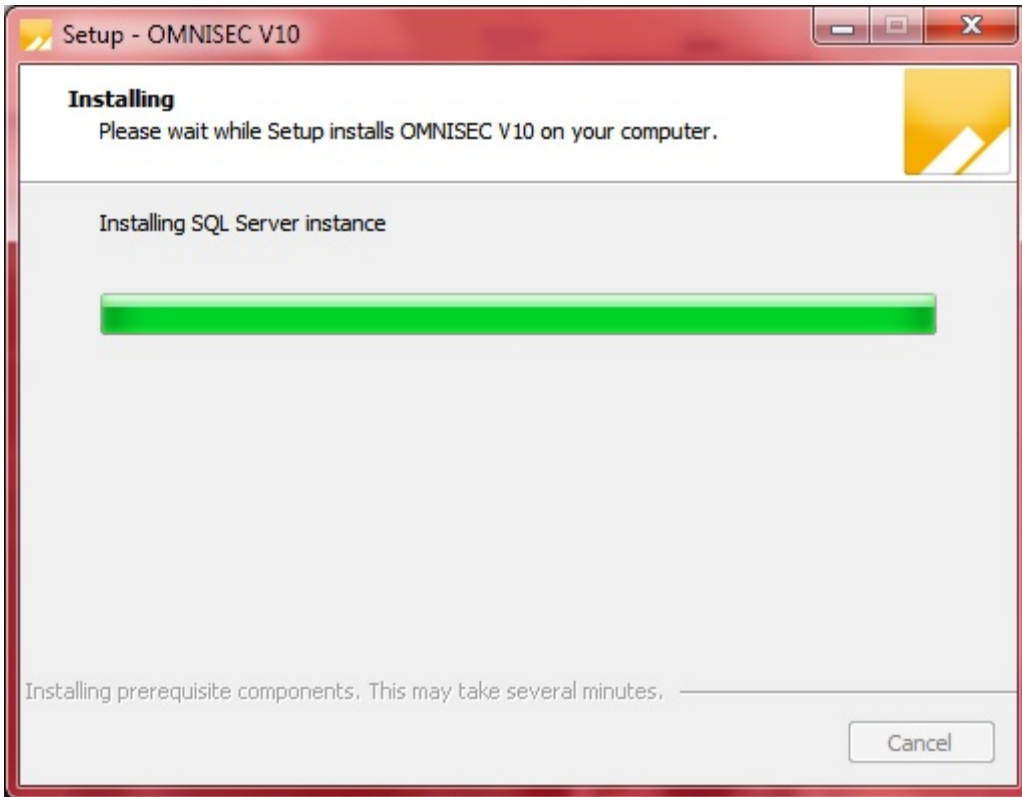
In most cases, OMNISEC should install automatically when the CD is inserted in the drive. If it doesn't, the user can double-click on the installer file, OMNISEC100.exe, to begin the installation.



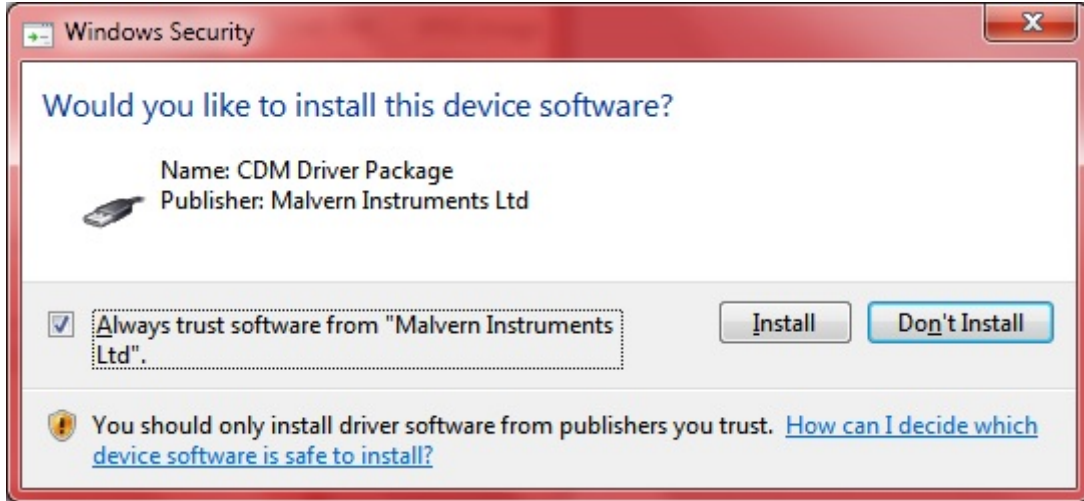
When the Setup window appears, select Next to process. You can select cancel if you would like to stop the setup and continue another time.



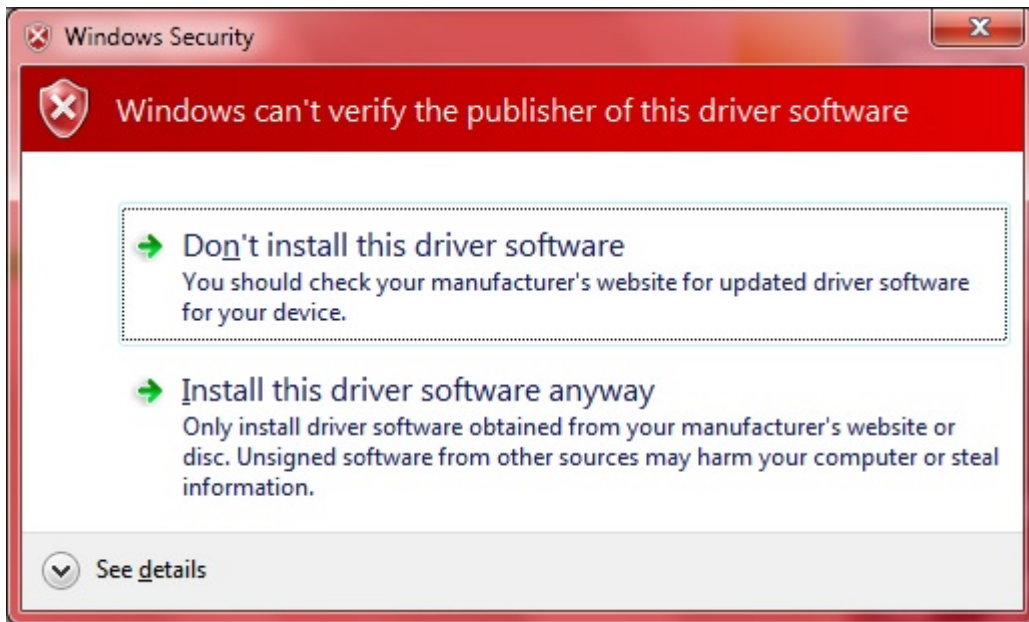
Once you have followed all of the instructions and clicked "Install", the software will begin the installation process.



If this is the first time OMNISEC v10 is being installed, it will install a 2014 SQL Server instance. This process may take 10 to 20 minutes to complete.

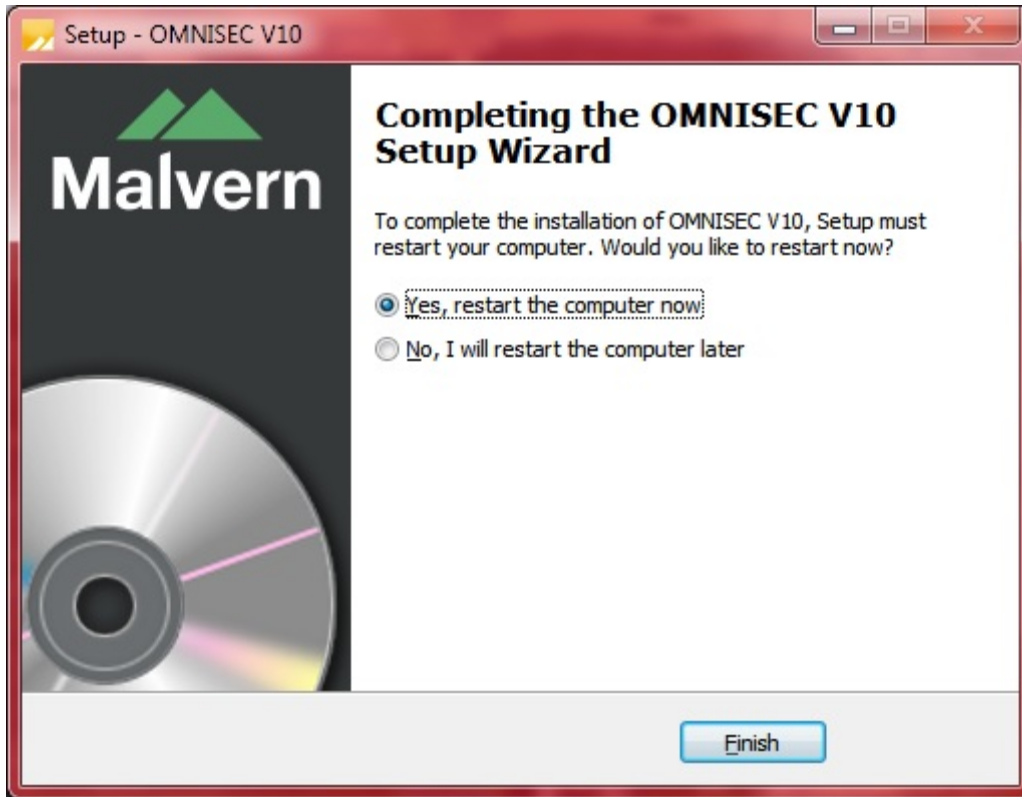


During the installation, a Windows Security window may appear asking if you would like to install a device. Select "Install" to install the device.



Another Windows Security window may appear stating "Windows can't verify the publisher of this driver software". Select "Install this driver software anyway" to continue.

This warning can safely be ignored as the software installation has been fully tested on Windows 7.



The last section in the Setup window will inform you that the computer needs to be restarted to complete the setup. Once the computer has been fully restarted, OMNISEC v10 will be ready to use.

### Connecting the OMNISEC to a PC

With the software installed, the instrument should be connected via the USB port, and the system switched on. If present, turn on OMNISEC RESOLVE first and wait 30 seconds for it to complete its startup. Next, turn on OMNISEC REVEAL and wait 1 minute to allow it to complete its startup and connect to OMNISEC RESOLVE. When the two instruments are connected, the light bars on both instruments should be green.

If this is the first time connecting the instrument to the PC, there will be a message that appears saying "Installing device driver software". The names used to identify the drivers will be "CMULx25", "CHROME TAU A" and "CHROME TAU B". Allow the installation to proceed and do not disconnect the instrument from the PC during this process. Once the drivers have been installed, Windows will indicate that they are ready to use.

### Uninstall Procedure

The software can be uninstalled using the 'Programs and Features' section of the Windows 7 'Control Panel'.

### New Features

Since this version of the software is a maintenance release, there are no new features in this version.

### Fixed issues

The main issues fixed in this release of the software are listed in table 2.

**Table 2: bug fixes implemented in OMNISEC 10.02.**

Reference(s)	Issue	Comment
<b>Bug 40175</b>	Add Auto sampler error messages to help hardware debugging	Fixed
<b>Bug 40138</b>	Prevent Instrument Communications Deadlocking	Fixed
<b>PBI 40063</b>	Improve Instrument Communications stability	Fixed
<b>Bug 40099</b>	Application Crash if opening a record with no associated data file	Fixed
<b>NA</b>	Update wait loop to be compatible with Firmware changes to RI and DP Balance	Fixed
<b>Bug 40088</b>	Setting auto sampler temperature crashes 10.01 application on Reveal-only instrument	Fixed
<b>Bug 40110</b>	Process sometimes stays running when software is exited	Fixed

## Known Issues

The following software bugs have been discovered within the software, and will be investigated as part of a future release. Please follow the suggested work-around.

**Table 1: Known issues in OMNISEC v10.02 software.**

Reference(s)	Issue	Workaround
<b>39638</b>	It is not possible to display the calculated dA/dc	Unfortunately there is no workaround at this time and it will be implemented as soon as possible.
<b>39510</b>	If the signal from one detector is not present then calculations of results may fail.	A missing signal is likely due to a hardware failure which must be repaired.
<b>39602</b>	After extended periods of working with large datasets, the software may run out of memory	Save analyses regularly and restart the software if the problem occurs
<b>39571</b>	If the software is importing data while running and the data acquisition completes, the software may crash	Avoid importing data when a data acquisition is nearing completion
<b>39271</b>	When the autosampler encounters a missing vial, the message "Please set the sample and retry" is displayed.	Replace the missing vial and click ok. The message will be improved in a future release.
<b>39273</b>	When the autosampler encounters a missing vial, there is no way to cancel the run.	Put a vial in place and continue.
<b>39369</b>	Zooming with the mouse wheel does not work on the UV spectrum map	Zoom by drawing a box around the area of interest.
<b>39458</b>	The Run Conditions Summary view may display incorrect values.	Check the values on the Records View to identify the correct ones.
<b>39436</b>	Automatically generated suffixes in calculation method names can be inconsistent in their formatting.	Manually rename calculation methods when they are modified
<b>39314</b>	The search feature in the columns database only works for column sets, not columns.	Manually search the columns list.
<b>39315</b>	Internet Explorer may block the help file from appearing depending on security settings	Allow Internet Explorer to display blocked content by clicking on the "Allow blocked content" button at the

		bottom of the screen.
39621	The Export to OmniSEC 5.1 function cannot export UV data if the data file is too large and the software will freeze.	Close the software through Windows and use the OMNISEC data without UV data as this will still be exported correctly.
39616, 39632	Under some circumstances, the software does not correctly manage commas used as decimal points, for PCs set up with European languages such as German and French.	Be conscious of the incorrect usage when analysing data.
39617	After some crashes, the software may not restart	Re-install the software. No data will be lost by doing this.
39631	After resizing windows in the software, copied and pasted images may appear with a black border.	Restart the software.
39632	The simulator does not run correctly on PCs that use European number formatting.	Unfortunately the only workaround is to run the simulator on a PC set to English (United States) number format.
39633	When manually setting the UV wavelength in the PDA view, it is possible to send the slider bar off scale	Type a wavelength in the box that is within the scale of the graph.
39623	During a baseline monitor, the retention volume assumes the flow rate is 1ml/min meaning retention volume may not be displayed correctly.	When running the baseline monitor, assume the Retention Volume is actually reporting Retention Time.
39334	Maximum flow rate values for columns are not displayed in column sets	Take care to ensure that flow rates above a column's rated maximum are not used.
39350	The Calculation Method Summary compare function is not working	Unfortunately there is no workaround at this time and it will be implemented as soon as possible.
39364	The Help button in the Report Selector does not function	Open the help file from the Start Page or another area.
39446	The Copy button does not work in the Print Preview window	Copy the image directly from the report pages or the charts.
39480	It is possible for the Zoom buttons in the ribbon bar to be inappropriately greyed out.	Use the right click menu in the chart you wish to zoom out of.
39825	An error may occur with the Rg calculation when a data's peak is very narrow	Adjusting the limit may fix this error. If this error does occur, do not attempt and copy the data in the derived data chart.
39818	Under some condition(s), the laser indicator (green "lamp") may not show the correct on/off status	Restarting both instruments should fix this problem.
39811	Setting auto baselines when zoomed in doesn't plot the baseline lines.	Zoom out fully, remove the baseline and set it before you zoom in.
39810	Zooming in on the RALS data in the Raw data chart zooms in incorrectly.	Pan the chart down and you should eventually see the RALS data.

## SOFTWARE UPDATE NOTIFICATION

39792	The Calculation method summary may be disabled even after data has been analyzed.	Click on the Home tab and then click back on the Report tab. The Calculation method should be enabled.
39791	The sample info have repeated names in some of the properties.	This has no effect on the results being displayed.
39871	Abandon Changes buttons are enabled even when no changes have been made.	This has no effect on the results or the data in the charts.
39780	Axis on Raw data chart are removed when switch tabs in the Detail View.	Toggle the channels back on to bring them back.
39756	The pump may be set to its standby rate during a sequence.	Rerun the sequence if this occurs.
39645	Clicking on the Stop button in the Sequence view to stop the sequence may cause the Run length box to remain disabled.	Restart OMNISEC to fix this problem.
39635	BSA calibration may produce wrong recovery results.	
39620	The may be various errors when trying to load a large analyzed data that uses UV acquisition.	It is recommended to not load in large analyzed files which include UV data.
39594	Error in overlay chart when loading data in which there is no DP or IP.	
39592	Calculation error when there is no DP or IP.	
39582	In simulation mode, pump does not stop when pressure alarm goes comes on.	
39555	Auto Sampler error code 0108.	
39551	Poorly aligned right border lines in the sample info table when more than 2 analysis are selected.	This is a formatting problem which does not affect the results displayed.
39550	Poorly aligned right border lines in the Results by sample and peak table when there are more than 1 peaks.	This is a formatting problem which does not affect the results displayed.
39493	Primary axis cannot be set if there is no grid lines.	Display grid lines using the right-click menu, then set the primary axis.
39491,39492	Axis scaling may not work correct on some charts.	
39457	Errors regarding the print preview window.	
39446	Copy button does not work in the print preview window.	Copy tables directly from the charts in the main display.
39442	Creating a new report and closing it without saving disables the Report selector button.	Select the Home tab and select the Reports tab should enable it again.
39366	The Help button does nothing in the statistics table report item.	Load the help system from the main ribbon bar.



<b>39334</b>	Values for the flowrate column are empty in the column set database browser.	The values can be seen by selecting the Column tab.
<b>39289</b>	Disconnecting the instrument right before acquisition and reconnecting causes nothing to be acquired but the acquisition to still be plotting.	Restart the sequence.
<b>39567</b>	Error when there is no RI data.	

## Malvern Instruments Ltd

Enigma Business Park • Grovewood Road  
Malvern • Worcestershire • UK • WR14 1XZ

Tel: +44 (0)1684 892456

Fax: +44 (0)1684 892789

## Malvern Instruments Worldwide

Sales and service centers in over 50 countries  
for details visit [www.malvern.com/contact](http://www.malvern.com/contact)

© Malvern Instruments Ltd 2015

**more information at [www.malvern.com](http://www.malvern.com)**